

# Ethanol Regulation of D<sub>1</sub> Dopamine Receptor Signaling is Mediated by Protein Kinase C in an Isozyme-Specific Manner

Elizabeth B Rex<sup>1,2,4</sup>, Michele L Rankin<sup>1,4</sup>, Marjorie A Ariano<sup>3</sup> and David R Sibley<sup>\*,1</sup>

<sup>1</sup>Molecular Neuropharmacology Section, National Institute on Neurological Disorders and Stroke, National Institutes of Health, Bethesda, MD, USA; <sup>2</sup>National Institute on Alcohol Abuse and Alcoholism, National Institutes of Health, Rockville, MD, USA; <sup>3</sup>Department of Neuroscience, The Chicago Medical School at Rosalind Franklin University of Medicine and Science, North Chicago, IL, USA

Ethanol consumption potentiates dopaminergic signaling that is partially mediated by the D<sub>1</sub> dopamine receptor; however, the mechanism(s) underlying ethanol-dependent modulation of D<sub>1</sub> signaling is unclear. We now show that ethanol treatment of D<sub>1</sub> receptor-expressing cells decreases D<sub>1</sub> receptor phosphorylation and concurrently potentiates dopamine-stimulated cAMP accumulation. Protein kinase C (PKC) inhibitors mimic the effects of ethanol on D<sub>1</sub> receptor phosphorylation and dopamine-stimulated cAMP levels in a manner that is non-additive with ethanol treatment. Ethanol was also found to modulate specific PKC activities as demonstrated using *in vitro* kinase assays where ethanol treatment attenuated the activities of lipid-stimulated PKC $\gamma$  and PKC $\delta$  in membrane fractions, but did not affect the activities of PKC $\alpha$ , PKC $\beta$ <sub>1</sub>, or PKC $\epsilon$ . Importantly, ethanol treatment potentiated D<sub>1</sub> receptor-mediated DARPP-32 phosphorylation in rat striatal slices, supporting the notion that ethanol enhances D<sub>1</sub> receptor signaling *in vivo*. These findings suggest that ethanol inhibits the activities of specific PKC isozymes, resulting in decreased D<sub>1</sub> receptor phosphorylation and enhanced dopaminergic signaling.

*Neuropsychopharmacology* (2008) **33**, 2900–2911; doi:10.1038/npp.2008.16; published online 20 February 2008

**Keywords:** ethanol; dopamine; PKC; D<sub>1</sub> receptor; DARPP-32; phosphorylation

## INTRODUCTION

Dopaminergic signaling in the brain is the target of many drugs of abuse, including alcohol. Changes in dopaminergic signaling within the mesolimbic network contribute to the rewarding and reinforcing effects of alcohol abuse (Samson *et al*, 1992). A major component of the mesolimbic dopaminergic system is the nucleus accumbens (NAc) that receives dopaminergic innervations from the ventral tegmental area (VTA). Among the many effects of ethanol (EtOH) consumption is the potentiation of dopamine (DA) release from the VTA dopaminergic neurons and the elevation of DA levels in the NAc (Weiss *et al*, 1993; Brodie *et al*, 1999). During withdrawal, in the absence of EtOH, the spontaneous activity of the VTA dopaminergic neurons is reduced (Shen and Chiodo, 1993; Shen, 2003). Given the well-accepted role of DA in addiction and reward pathways, it is not surprising that DA receptors have been implicated in alcohol-related behaviors.

DA receptors are members of the G-protein-coupled receptor superfamily and five distinct subtypes have been cloned and pharmacologically characterized (D<sub>1</sub>–D<sub>5</sub>). Although gene deletion and pharmacological studies have implicated both D<sub>1</sub> and D<sub>2</sub> receptors in mediating dopaminergic responses to EtOH administration (El-Ghundi *et al*, 1998; Phillips *et al*, 1998; Eiler *et al*, 2003; Inoue *et al*, 2007), the D<sub>1</sub> subtype appears to be particularly important with respect to the rewarding properties of EtOH and motivation for its consumption. For instance, administration of the D<sub>1</sub> receptor antagonists SCH23390 or ecopipam decreases EtOH consumption in mice, whereas administration of the D<sub>1</sub> agonist SKF81297 with EtOH facilitates alcohol-related behaviors (El-Ghundi *et al*, 1998; D'Souza *et al*, 2003; Price and Middaugh, 2004). DARPP-32, the downstream target of D<sub>1</sub> receptor signaling, has also been implicated in EtOH-mediated signaling. At the cellular level, EtOH treatment increases phosphorylation of DARPP-32 and is reported to regulate NMDA receptor activity in the NAc (Maldve *et al*, 2002). Moreover, in mice lacking DARPP-32, EtOH-dependent reinforcement is absent (Maldve *et al*, 2002). Despite a growing body of evidence implicating D<sub>1</sub> receptor function in EtOH-mediated behaviors, nothing is known about the mechanisms by which EtOH regulates D<sub>1</sub> receptor signaling.

In the present study, we show that EtOH treatment of cells expressing the D<sub>1</sub> receptor diminishes its phosphorylation

\*Correspondence: Dr DR Sibley, Molecular Neuropharmacology Section, National Institute on Neurological Disorders and Stroke/ National Institutes of Health, 5625 Fishers Lane, Room 45-04, Bethesda, MD 20892-9405, USA, Tel: +1 301 496 9316, Fax: +1 301 480 3726, E-mail: sibley@helix.nih.gov

<sup>4</sup>These authors contributed equally to this work

Received 14 November 2007; revised 18 January 2008; accepted 22 January 2008

state, resulting in enhanced DA stimulation of intracellular cyclic AMP (cAMP) levels. These effects of EtOH appear to be mediated through cellular inhibition of specific protein kinase C (PKC) isozymes that constitutively phosphorylate the D<sub>1</sub> receptor and dampen its signaling potential. We additionally show that EtOH treatment potentiates D<sub>1</sub> receptor-stimulated DARPP-32 phosphorylation in rat striatal slices, thus supporting the notion that EtOH enhances D<sub>1</sub> receptor-signaling pathways *in vivo*. These results reveal a new mechanism of action for how EtOH consumption potentiates dopaminergic neurotransmission and activates reward and reinforcement pathways in the brain.

## MATERIALS AND METHODS

### Materials

HEK293-tsa201 (HEK293T) cells were a gift from Dr V Ramakrishnan. FLAG-PKC $\epsilon$  and HA-PKC $\beta$ 1 were gifts from Dr A Toker. HA-PKC $\delta$  and 3XFLAG-PKC $\gamma$  were gifts from Dr JF Mushinski (Mischak *et al*, 1993) and Dr A Newton, respectively. GFP-PKC $\alpha$  was a gift from Dr M Akbar. The CnA\* construct was a kind gift from Dr S Williams. The G-protein-coupled receptor kinase 2 (GRK2) and GRK3 constructs were a kind gift from Dr JL Benovic. Okadaic acid and cantharidin were purchased from Sigma (St Louis, MO). Rottlerin and GF109203X were purchased from Tocris (Ellisville, MI). Gö6983 and the PKC $\beta$  inhibitor 3-(1-(3-imidazol-1-ylpropyl)-1H-indol-3-yl)-4-anilino-1H-pyrrole-2,5-dione were purchased from Calbiochem (San Diego, CA). FK-506 was purchased from LC Laboratories (Woburn, MA).

### Cell Culture and Transfection

HEK293T cells were cultured in DMEM supplemented with 10% fetal bovine serum, 1 mM sodium pyruvate, 50  $\mu$ g/ml streptomycin, and 50 U/ml gentamicin at 37°C in 5% CO<sub>2</sub>. HEK293T cells were seeded in 150-mm culture dishes and transfected 24 h later by calcium phosphate precipitation (Clontech, Mountain View, CA). Each plate was transfected with FLAG-tagged rat D<sub>1</sub> receptor DNA (Monsma *et al*, 1990) or cotransfected with vector, CnA\*, GRK2, GRK3, or PKC DNA constructs.

### Radioligand-Binding Assays

Transfected HEK293T cells were incubated in the presence or absence of EtOH, harvested in Ca<sup>2+</sup>/Mg<sup>2+</sup>-free EBSS supplemented with 5 mM EDTA, and centrifuged at 200g for 10 min. Cells were lysed in a dounce homogenizer in 5 mM Tris-HCl, pH 7.4 (at 4°C), and 5 mM MgCl<sub>2</sub>. The lysate was centrifuged at 20 000g for 30 min and the pellet resuspended in 50 mM Tris-HCl (crude membrane fraction). A portion of the membrane suspension was quantitated using BCA protein assay kit (Pierce, Rockford, IL). The membrane fraction (100  $\mu$ l) was added to tubes in triplicate containing [<sup>3</sup>H]-SCH23390 (Perkin Elmer, Boston, MA) at a range of concentrations. Non-specific binding was determined in the presence of (+)-butaclamol (3  $\mu$ M) (Sigma). Assay tubes were incubated at room temperature for 1.5 h and then

terminated by rapid filtration through GF/C filters pretreated with 0.6% polyethyleneimine. Bound radioactivity was quantitated by liquid scintillation counting.

### cAMP Assay

Transfected HEK293T cells were seeded into 24-well plates coated with poly-D-lysine. Duplicate wells were exposed to dopamine dilutions that were prepared in 20 mM HEPES buffered DMEM supplemented with 200  $\mu$ M sodium metabisulfite and 30  $\mu$ M RO-20-1724 (a phosphodiesterase inhibitor) (Sigma). Basal activity was determined in the absence of dopamine. The plates were incubated at 37°C for 15 min. The reaction was terminated by removing the medium and adding 3% perchloric acid to each well for 30 min on ice. Each reaction was neutralized by adding 15% KHCO<sub>3</sub>. cAMP accumulation was measured using the [<sup>3</sup>H]-cAMP assay kit from DPC<sup>®</sup> (Los Angeles, CA).

### In Situ Phosphorylation Assay

These assays were performed as described previously (Rankin *et al*, 2006). Briefly, transfected HEK293T cells were seeded into six-well plates coated with poly-D-lysine. A portion of the transfection was retained in a 100-mm dish for radioligand-binding assay to quantitate the expression of D<sub>1</sub> receptor expression. Forty-eight hours post transfection, medium from each well was replaced with phosphate-free medium supplemented with 10% FBS, 50 U/ml penicillin, and 10  $\mu$ g/ml gentamicin, and incubated for 1 h. The medium was replaced with 1 ml phosphate-free DMEM containing 106  $\mu$ Ci/ml [<sup>32</sup>P]-orthophosphoric acid (Perkin Elmer) for 50 min. EtOH was added to appropriate wells and incubated for a further 10 min. Subsequently, specific wells were challenged with basal medium  $\pm$  EtOH or media containing 10  $\mu$ M dopamine  $\pm$  EtOH for 10 min. The cells were placed on ice, rinsed with ice-cold EBSS, and lysed with solubilization buffer (50 mM HEPES, pH 7.4, 40 mM sodium pyrophosphate, 50 mM NaF, 150 mM NaCl, 10% glycerol, 1% Triton X-100, and 1 mM EDTA) supplemented with MiniComplete<sup>™</sup> protease inhibitor cocktail (Roche Applied Science, Indianapolis, IN) for 1 h at 4°C. Cell lysates were cleared by centrifugation and protein concentration were quantitated using BCA protein assay kit. D<sub>1</sub> receptor expression was determined by radioligand-binding assays using cells seeded in the 100-mm dish. Equal amounts of D<sub>1</sub> receptor for each condition were incubated with anti-FLAG-M2 agarose gel (Sigma) overnight, washed three times, and resolved using 4–12% Bis-Tris NuPage gels using MOPS buffer (Invitrogen, Carlsbad, CA). Dried gels were subjected to autoradiography.

### PKC Activity

HEK293T cells expressing tagged PKC isozymes were seeded into duplicate culture dishes. One plate was used for EtOH pretreatment (100 mM/10 min). Cells were harvested in phosphate-buffered saline (PBS), centrifuged at 200g for 10 min, and the pellet was homogenized in 1 ml homogenization buffer (250 mM sucrose, 50 mM Tris-HCl, 10 mM EGTA, 2 mM EDTA, 30 mM NaF, and 20 mM sodium pyrophosphate) supplemented with MiniComplete protease

inhibitor cocktail. The samples were centrifuged at 20 000g for 30 min at 4°C and the supernatant was collected as the cytosolic fraction. The pellet was resuspended and homogenized with 1 ml homogenization buffer containing 1% Triton X-100 and supplemented with MiniComplete protease inhibitor cocktail. The homogenate was centrifuged for 5 min at 9000g and the supernatant used as the membrane fraction. For FLAG-tagged or HA-tagged PKC constructs, each fraction was transferred to tubes containing 50 µl of equilibrated anti-FLAG M2-gel or anti-HA agarose gel (Sigma), respectively, and rotated for 60 min at 4°C. For the GFP-tagged PKC construct, fractions were incubated with a rabbit polyclonal antibody to GFP (Novus Biologicals, Littleton, CO) and rotated for 60 min at 4°C, followed by incubation with 50 µl equilibrated protein-G agarose for a further 60 min at 4°C. Samples were centrifuged at 9000g for 1 min at 4°C and the pellets were washed three times with PBS. Each pellet was resuspended with 70 µl PBS. Kinase assays were performed using a PKC assay kit (Upstate, Lake Placid, NY) according to the manufacturer's instructions. The kinase activity in 10 µl of each immunoprecipitated fraction was assayed by measuring the transfer of <sup>32</sup>P<sub>i</sub> from [ $\gamma$ -<sup>32</sup>P]ATP to a specific substrate peptide (Upstate). PKC activity was measured in an assay containing assay dilution buffer II (ADBII end concentration–3.33 mM MOPS (pH 7.2), 4.2 mM  $\beta$ -glycerol phosphate, 0.17 mM sodium orthovanadate, 0.17 mM dithiothreitol, and 0.12 mM CaCl<sub>2</sub>), 83 µM PKC substrate peptide, 0.3 µM PKA inhibitor peptide, 3.3 µM CaMK inhibitor, and PKC lipid activators (80 ng/µl phosphatidyl serine (PS), and 8 ng/µl diacylglycerol (DAG)). EtOH was added from a concentrated stock solution. Maximal PKC activity was achieved in the presence of PS and DAG. Basal activity was measured in the presence of 0.5 mM EGTA instead of PS and DAG. Non-specific activity was determined in the absence of substrate peptide. Each condition was performed in duplicate. Kinase reactions were initiated by adding 10 µCi [ $\gamma$ -<sup>32</sup>P]ATP in Mg<sup>2+</sup>/ATP cocktail, and were incubated for 10 min at 30°C. The reactions were terminated by transferring 25 µl of the mixture to P81 filter papers, followed by washing three times with 0.75% phosphoric acid and once with acetone. The amount of phosphorylated peptide was determined by scintillation counting.

### Immunohistochemistry

Fresh frozen rat brains were sectioned at 10 µm in the coronal plane, and three sections were mounted onto glass microscope slides. After drying at room temperature until the sections were opaque, slides were treated at the same temperature as follows: control, incubated in PBS (30 min); agonist–control, incubated in PBS (15 min) then SKF 81297 (1 µM, 15 min); ethanol–control, incubated in 25 mM EtOH (15 min) then PBS (15 min); ethanol–agonist, incubated in 25 mM EtOH (15 min) then SKF 81297 (1 µM, 15 min). Slides were dipped in PBS, fixed in 4% paraformaldehyde buffered in PBS for 5 min, followed by a 5-min PBS rinse. Sections were incubated in primary phospho-DARPP-32 antisera (diluted 1:100; Chemicon Inc, Temecula CA) overnight in a humidified chamber at 4°C. Slides were rinsed in PBS then exposed to fluorescently labeled

secondary antisera (Invitrogen Molecular Probes, Carlsbad, CA) for 1.5 h in a humidified chamber at 4°C. After a final PBS rinse, sections were examined immediately using epifluorescence. Image acquisition and analysis was as described previously (Ariano *et al*, 2005). Briefly, image exposure durations were based on the control sections, and were taken from this treatment set. The other three treatments used these settings, and again, a minimum of six images was obtained. Fluorescence intensities were determined using the histogram function of Adobe Photoshop (San Jose, CA) and compared with the control condition, which was arbitrarily set to 100. Experiments were performed three times.

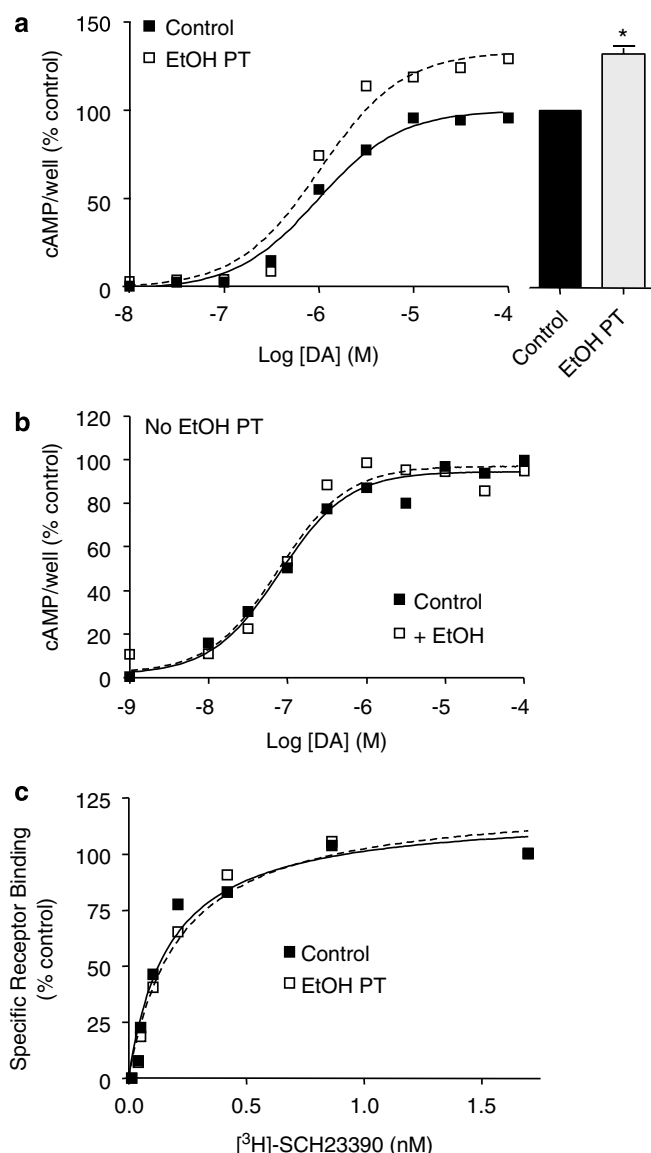
### Data Analysis

For phosphorylation assays, the relative intensities of bands on the autoradiographs were determined by scanning and analyzing the bands using LabWorks 4.0 (UVP Inc., Upland, CA). Figures depict representative graphs or autoradiographs for each experimental condition. All experiments were performed at least three independent times. Where shown, data are presented as the mean  $\pm$  SEM. Comparisons of all data to the control were performed using analysis of variance (one-way ANOVA) and Dunnett's *post hoc* test. Comparisons between selected data pairs were analyzed using ANOVA followed by the Bonferroni post test, or in some cases by Student's *t*-test. All statistical analyses were performed with a level of significance established at  $p < 0.05$ . Statistical analyses were conducted using GraphPad Prism 4 (GraphPad Prism Inc., San Diego, CA) software.

## RESULTS

### Ethanol Treatment Modulates D<sub>1</sub> Receptor Phosphorylation and Signaling

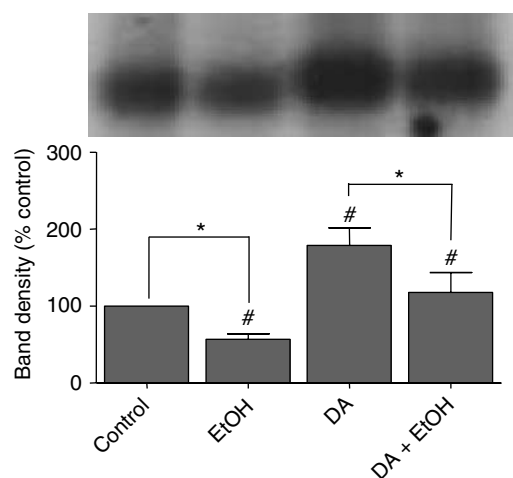
EtOH-dependent modulation of DA-stimulated cAMP levels was examined in HEK293T cells expressing the FLAG-tagged rat D<sub>1</sub> receptor. Importantly, HEK293T cells provide a suitable cellular environment to examine D<sub>1</sub> receptor signaling, desensitization, and trafficking (Rankin *et al*, 2006). Treatment of cells with EtOH (100 mM) for 15 min significantly potentiated maximal DA-stimulated cAMP levels by  $\sim 30\%$ , without altering agonist potency (Figure 1a). Potentiation of cAMP accumulation was observed with EtOH concentrations as low as 10 mM (data not shown); however, we routinely used 100 mM to obtain maximally consistent results. We also examined the effect of longer EtOH treatment periods (up to 60 min) and observed a similar potentiation of DA-stimulated cAMP levels (data not shown). Notably, EtOH-dependent potentiation of cAMP production required a pretreatment period, as direct addition of EtOH to the cAMP assay did not potentiate cAMP levels (Figure 1b). To establish if the EtOH effect was due to an increase in D<sub>1</sub> receptor-binding activity, membranes prepared from either control cells or cells pretreated with EtOH were assayed using the D<sub>1</sub>-specific radioligand [<sup>3</sup>H]SCH23390. EtOH treatment did not significantly alter D<sub>1</sub> receptor levels (Figure 1c), suggesting



**Figure 1** EtOH pretreatment potentiates D<sub>1</sub> receptor-mediated cAMP accumulation. (a) HEK293T cells expressing the rat D<sub>1</sub> receptor were pretreated with EtOH (100 mM) for 15 min prior to cAMP assay. For those cells pretreated with EtOH (EtOH PT), EtOH was also maintained in the assay buffer. Control cells were never exposed to EtOH. EtOH pretreatment  $E_{max}$ ,  $132 \pm 3\%$  of control. Average  $EC_{50}$  values  $\pm$  SEM for control and EtOH pretreatment are  $473 \pm 200$  and  $446 \pm 200$  nM, respectively. (b) EtOH-dependent cAMP potentiation is not observed without pretreatment. EtOH (100 mM) was added to the cells with the addition of DA. (c) EtOH pretreatment does not significantly alter the expression of the D<sub>1</sub> receptor. Radioligand-binding experiments were performed on membranes prepared from control cells or cells pretreated with 100 mM EtOH for 15 min. All data are normalized as the percentage of control and are representative of 3–4 independent experiments (\* $p < 0.05$ , paired Student's *t*-test).

that EtOH increases the coupling of the D<sub>1</sub> receptor to its G-protein.

To more definitely determine the mechanism responsible for EtOH-dependent modulation of D<sub>1</sub> receptor signaling, we examined the effect of EtOH on D<sub>1</sub> receptor phosphorylation, as this post-translational modification is known to regulate D<sub>1</sub> receptor function primarily in a negative



**Figure 2** EtOH pretreatment reduces phosphorylation of the D<sub>1</sub> receptor. *In situ* phosphorylation assays were performed on HEK293T cells expressing the D<sub>1</sub> receptor. Cells were pretreated with EtOH (100 mM) or media for 10 min prior to a further 10 min incubation with either media (control), dopamine (DA, 10  $\mu$ M), EtOH (100 mM), or DA + EtOH as indicated. Control and cells stimulated with only DA were never exposed to EtOH. (Top) Autoradiogram of D<sub>1</sub> receptor immunoprecipitates from a representative *in situ* phosphorylation assay; (bottom) band density for each condition. The data are normalized as the percentage of control and are representative of four independent experiments (\* $p < 0.05$ , ANOVA followed by Bonferroni pairwise comparisons; # $p < 0.05$  compared with the control, ANOVA followed by Dunnett's *post hoc* test).

manner (Tiberi *et al*, 1996; Jiang and Sibley, 1999; Gardner *et al*, 2001; Mason *et al*, 2002; Kim *et al*, 2004; Rankin *et al*, 2006). Cells expressing the D<sub>1</sub> receptor were metabolically labeled with H<sub>3</sub>[<sup>32</sup>P]PO<sub>2</sub> and either pretreated with EtOH for 10 min or never exposed to EtOH (control cells), followed by a 10-min treatment with either media, EtOH, DA, or DA + EtOH. The D<sub>1</sub> receptor was then immunoprecipitated and subjected to autoradiography. Under basal conditions, EtOH treatment decreased phosphorylation of the D<sub>1</sub> receptor by  $43 \pm 6\%$  (Figure 2). EtOH also decreased agonist-stimulated D<sub>1</sub> receptor phosphorylation by a similar magnitude, suggesting that the EtOH-dependent decrement of receptor phosphorylation was primarily due to a decrease in basal phosphorylation. On the basis of these data, we hypothesized that EtOH decreases basal D<sub>1</sub> receptor phosphorylation, with a concomitant enhancement of signaling, by either activating a protein phosphatase or inhibiting a protein kinase that constitutively phosphorylates the receptor.

### Serine/Threonine Phosphatases, GRKs, and EtOH-Dependent Potentiation of D<sub>1</sub> Receptor Signaling

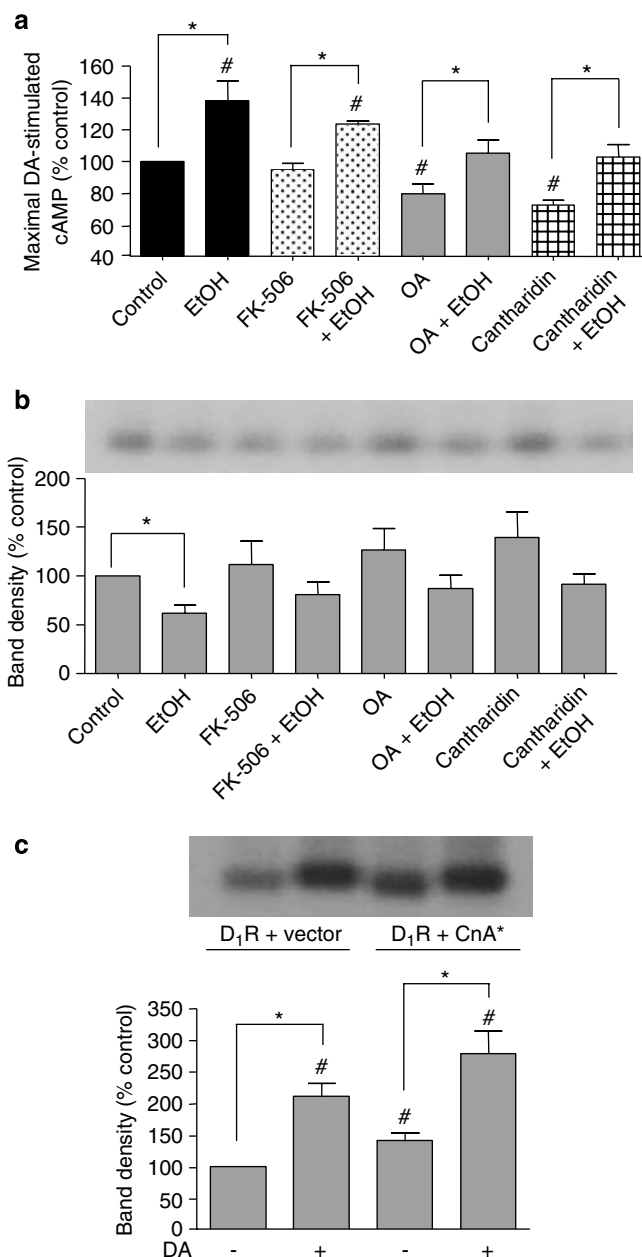
Accordingly, if EtOH was activating a protein phosphatase, then treatment of cells with protein phosphatase inhibitors should abolish EtOH-dependent potentiation of cAMP accumulation and decrement of basal D<sub>1</sub> receptor phosphorylation. As the D<sub>1</sub> receptor is known to be phosphorylated exclusively on serine and threonine residues (Tiberi *et al*, 1996; Gardner *et al*, 2001; Mason *et al*, 2002; Kim *et al*, 2004), the repertoire of serine/threonine phosphatase expression in HEK293T cells was determined by western blot analysis (Supplementary Figure S1). Protein

phosphatases PP1, PP2A, PP2B, and PP4–6 were found to be expressed in these cells, whereas no signal was observed for PP2C. The effects of three phosphatase inhibitors were subsequently examined. Cantharidin inhibits protein phosphatases PP1 and PP2A, while FK-506 is specific for PP2B (calcineurin) and okadaic acid (OA) is a broad-spectrum phosphatase inhibitor that targets PP1, PP2A, and PP4–6. Cells were pretreated with the phosphatase inhibitors cantharidin, FK-506, or OA for 45 min. EtOH was added to samples 15 min prior to the end of the 45-min incubation period, followed by cAMP assay. In the absence of EtOH, pretreatment with either cantharidin or OA significantly decreased maximal cAMP accumulation when compared with the control. However, EtOH-dependent potentiation of DA-stimulated cAMP levels was not abolished (Figure 3a). Treatment of cells with FK-506 alone did not significantly alter DA-stimulated cAMP accumulation. However, EtOH treatment still significantly potentiated cAMP accumulation in cells pretreated with FK-506 (Figure 3a).

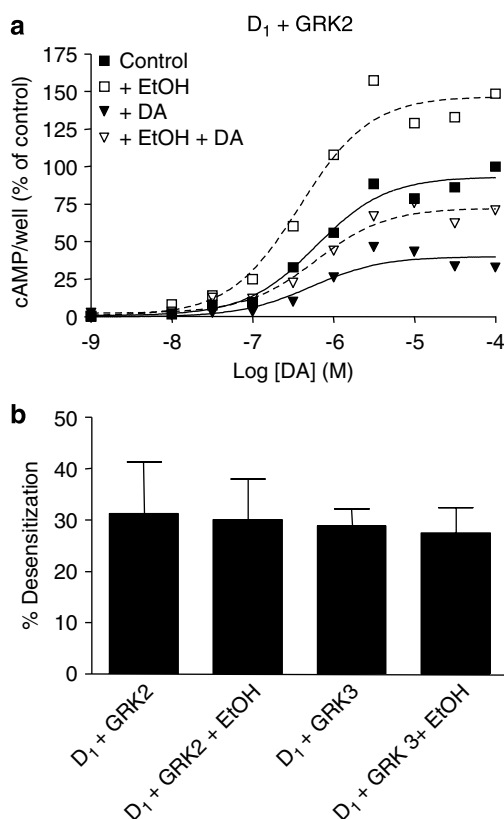
The effect of phosphatase inhibitor treatment on D<sub>1</sub> receptor phosphorylation was also examined. Cells were pretreated for 45 min with the phosphatase inhibitors and EtOH was added to the samples 10 min prior to the end of the treatment period, followed by incubation with media  $\pm$  EtOH for further 10 min. In agreement with the cAMP data shown in Figure 2a, pretreatment of cells with either cantharidin or OA increased basal D<sub>1</sub> receptor phosphorylation (Figure 3b). However, an EtOH-dependent decrease of D<sub>1</sub> receptor phosphorylation was still observed in cells pretreated with cantharidin, OA, or FK-506 (Figure 3b).

While the above results argue against EtOH modulation of phosphatase activity as a mechanism for enhancement of D<sub>1</sub> receptor signaling, we wished to further investigate the potential role of PP2B (calcineurin), as calcineurin has been reported to directly associate with the D<sub>1</sub> receptor (Adlersberg *et al*, 2004), although its role in receptor phosphorylation remains unclear. We thus employed an approach using cells cotransfected with the D<sub>1</sub> receptor and a constitutively active subunit of calcineurin (CnA\*) (Chin *et al*, 1998). If the effect of EtOH involved activation of calcineurin, then the constitutively active subunit may mimic these effects. Cells coexpressing the D<sub>1</sub> receptor + CnA\* or D<sub>1</sub> receptor + empty vector (control) were incubated with media or DA and D<sub>1</sub> receptor phosphorylation was assessed. As expected, treatment with DA increased D<sub>1</sub> receptor phosphorylation in control cells; however, coexpression with CnA\* did not diminish basal or DA-stimulated D<sub>1</sub> receptor phosphorylation (Figure 3c). In fact, basal and DA-stimulated receptor phosphorylation was increased in cells coexpressing CnA\* (Figure 3c). Taken together, these data further support the lack of calcineurin involvement in EtOH modulation of D<sub>1</sub> receptor signaling.

Our next approach was to investigate protein kinases known to phosphorylate and regulate the D<sub>1</sub> receptor. The best-characterized family of kinases in this regard are the GRKs, which primarily mediate agonist-induced phosphorylation and desensitization of the D<sub>1</sub> receptor (Tiberi *et al*, 1996; Rankin *et al*, 2006). On the basis of the *in situ* phosphorylation results (Figure 2); however, the EtOH-dependent decrease of D<sub>1</sub> receptor phosphorylation was not changed in cells treated with DA, suggesting that the effects of EtOH are agonist-independent and may not involve



**Figure 3** EtOH-dependent modulation of D<sub>1</sub> receptor signaling does not involve serine/threonine phosphatases. (a) HEK293T cells were pretreated with the phosphatase inhibitors cantharidin (10  $\mu$ M), FK-506 (10  $\mu$ M), or OA (1  $\mu$ M) for 45 min. EtOH (100 mM) was then added to the indicated samples 15 min prior to the end of the 45-min incubation period, followed by addition of 10  $\mu$ M DA to stimulate cAMP accumulation. (b) EtOH (100 mM) was added to the indicated samples 10 min prior to the end of the 45-min incubation period with individual phosphatase inhibitors, followed by assessment of basal receptor phosphorylation. (Top) Autoradiogram of D<sub>1</sub> receptor immunoprecipitates from a representative *in situ* phosphorylation assay; (bottom) band density for each condition. The data are normalized as the percentage of control and are representative of three independent experiments. (c) (Top) Autoradiogram of D<sub>1</sub> receptor immunoprecipitates isolated from cells coexpressing CnA\* or empty vector. Cells were stimulated with either buffer (basal) or DA (10  $\mu$ M) for 10 min. The autoradiogram is from a representative *in situ* phosphorylation assay; (bottom) band density for each condition. The data are normalized as the percentage of control for each individual experiment. The histograms represent mean  $\pm$  SEM from three independent experiments (\* $p$  < 0.05, ANOVA followed by Bonferroni pairwise comparisons; # $p$  < 0.05 compared with the control, ANOVA followed by Dunnett's *post hoc* test).



**Figure 4** EtOH pretreatment does not alter GRK2- or GRK3-mediated D<sub>1</sub> receptor desensitization. (a) HEK293T cells cotransfected with the D<sub>1</sub> receptor and GRK2 were pretreated with DA (10  $\mu$ M)  $\pm$  EtOH (100 mM) for 60 min prior to stimulation with the indicated concentrations of DA. Control cells were never exposed to EtOH or pretreated with DA. Data are normalized as percentage of the  $E_{max}$  value of the control. The dose response curves shown are from a representative experiment, whereas the histogram in (b) shows the mean percentage of D<sub>1</sub> receptor desensitization  $\pm$  SEM from three independent experiments. Percent desensitization for each condition was calculated by dividing the  $E_{max}$  of the desensitized cells (DA pretreatment) by the  $E_{max}$  of the corresponding control cells (no DA pretreatment), and then subtracting this ratio from 1 and converting to percentage.

GRKs. Nonetheless, to further investigate possible GRK involvement, the effect of EtOH on GRK2- and GRK3-mediated D<sub>1</sub> receptor desensitization was examined. If EtOH inhibits GRK activity, then agonist-induced desensitization should be reduced. Our previous observations indicated that GRK2 and GRK3 primarily mediate agonist-induced desensitization of the D<sub>1</sub> receptor (Rankin *et al*, 2006). Cells coexpressing the D<sub>1</sub> receptor and GRK2 or GRK3 were pretreated with DA to promote agonist-induced desensitization in the absence or presence of EtOH (Figure 4). In the absence of EtOH, DA pretreatment promotes an  $\sim$ 30% decrease (desensitization) in maximum DA-induced cAMP response. EtOH treatment alone potentiated DA-stimulated cAMP levels in cells coexpressing GRK2 (Figure 4a). However, EtOH treatment did not affect the ability of the D<sub>1</sub> receptor to undergo agonist-mediated desensitization in cells coexpressing GRK2 (Figure 4a and b). This was also true for cells coexpressing GRK3 (Figure 4b). Taken together, these results suggest that the effects of EtOH on D<sub>1</sub> receptor signaling are not mediated by inhibition of GRKs.

## PKC Inhibitors Mimic the Effects of EtOH on D<sub>1</sub>-Dependent Signaling

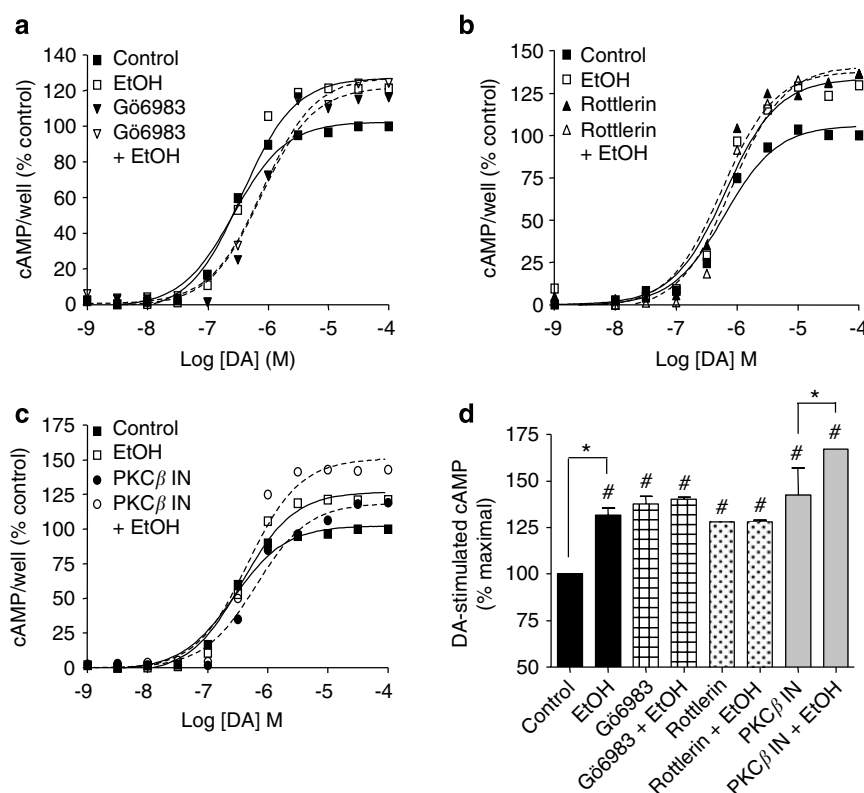
We previously published evidence that PKC may phosphorylate the D<sub>1</sub> receptor in an agonist-independent manner (Gardner *et al*, 2001). More recently, we have found that PKC phosphorylation of the D<sub>1</sub> receptor is constitutive in nature and primarily regulates the basal level of receptor phosphorylation (unpublished observations). As such, we were interested in examining the possibility that EtOH may inhibit the activity of PKC. As PKC phosphorylation of the D<sub>1</sub> receptor appears to be isozyme-specific (unpublished observations), we first examined the repertoire of PKC isozyme expression in HEK293T by western blot analysis (Supplementary Figure S1). PKC $\alpha$ , PKC $\beta_1$ , PKC $\delta$ , PKC $\epsilon$ , PKC $\zeta$ , PKC $\lambda$ , PKC $\mu$ , and PKC $\nu$  were found to be expressed in these cells at varying levels. In contrast, no signal was observed for PKC $\beta_2$ , PKC $\gamma$ , and PKC $\theta$ .

Using an approach similar to that described for the phosphatase inhibitors, cells were pretreated with the PKC inhibitors Gö6983, rottlerin, or PKC $\beta$  inhibitor for 45 min. EtOH was added to samples 15 min prior to the end of the 45-min incubation period, followed by cAMP assay. The broad-spectrum PKC inhibitor, Gö6983, and the reported PKC $\delta$ -selective inhibitor, rottlerin (Gschwendt *et al*, 1994), mimicked the effects of EtOH treatment and potentiated D<sub>1</sub> receptor-stimulated cAMP levels (Figure 5a, b, and d). Importantly, EtOH treatment did not further potentiate cAMP accumulation beyond that observed with the PKC inhibitor (ie, the effects were non-additive). The PKC $\beta$ -specific inhibitor also potentiated DA-stimulated cAMP levels; however, the response was further increased when cells were pretreated with EtOH (Figure 5c and d). It should be noted that the effect of Gö6983 on D<sub>1</sub>-stimulated signaling was not observed in a recent study by Jackson *et al*, where Gö6983 had no effect on D<sub>1</sub> receptor accumulation of cAMP. Surprisingly, PMA treatment potentiated D<sub>1</sub> receptor signaling (Jackson *et al*, 2005). Such discrepancies may be due to differences in experimental procedures and perhaps more importantly differences in the expression/activation profile of PKC isozymes.

We next examined the effect of PKC inhibitors on basal D<sub>1</sub> receptor phosphorylation. Cells were pretreated with the broad-spectrum PKC inhibitor GF109203X or rottlerin for 45 min. EtOH was added to samples 10 min prior to the end of the 45-min incubation period, followed by a 10-min incubation with media  $\pm$  EtOH. Consistent with cAMP data, treatment of cells with GF109203X or rottlerin mimicked the effect of EtOH and significantly reduced basal D<sub>1</sub> receptor phosphorylation (Figure 6). Importantly, basal D<sub>1</sub> receptor phosphorylation was not further decreased in cells pretreated with EtOH + PKC inhibitor beyond that observed with either agent alone. These results suggest a role for specific PKC isozymes in the EtOH-dependent modulation of D<sub>1</sub> receptor signaling.

## EtOH Attenuates Lipid-Activated PKC $\delta$ and PKC $\gamma$ in Membrane Fractions

On the basis of our data, we hypothesized that EtOH reduces D<sub>1</sub> receptor phosphorylation and enhances signaling by decreasing the activity of specific PKC isozymes.



**Figure 5** PKC inhibitors mimic the effects of EtOH on DA-dependent cAMP accumulation and receptor phosphorylation. HEK293T cells were pretreated with PKC inhibitors, (a) Gö6983 (10  $\mu$ M), (b) rottlerin (10  $\mu$ M), or (c) PKC $\beta$  inhibitor (PKC $\beta$  IN, 10  $\mu$ M), for 45 min. EtOH was added to select samples 15 min prior to the end of the 45-min incubation period, followed by cAMP assay. The data are normalized as the percentage of control. The dose response curves shown are from a representative experiment, whereas the histogram in (d) shows the mean  $E_{\max}$  values  $\pm$  SEM from three independent experiments (\* $p$  < 0.05, ANOVA followed by Bonferroni pairwise comparisons; # $p$  < 0.05 compared with the control, ANOVA followed by Dunnett's post hoc test).

To address this, selected PKC isozymes were examined for EtOH-dependent changes in kinase activity.

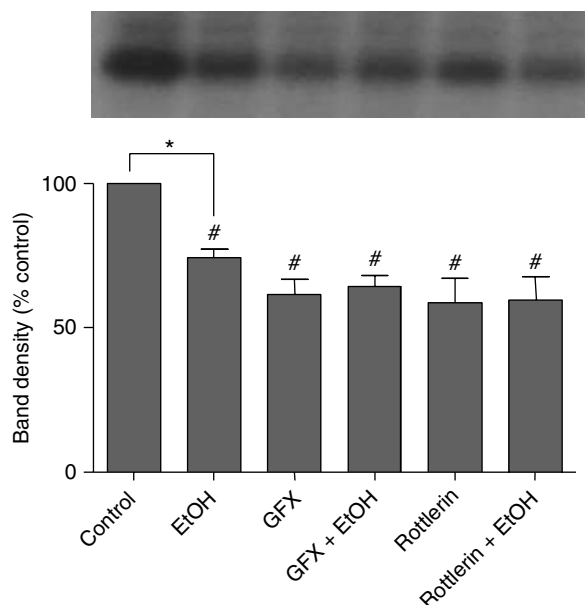
Cells were transfected with one of the following tagged PKC isozymes, HA-PKC $\delta$ , FLAG-PKC $\gamma$ , HA-PKC $\beta$ , FLAG-PKC $\epsilon$ , or GFP-PKC $\alpha$ . These isozymes were selected on the basis of their known expression in HEK293T cells (with the exception of PKC $\gamma$ ) (Supplementary Figure S1) and/or preliminary observations that they mediate D<sub>1</sub> receptor phosphorylation. In these experiments, cells were either pretreated with EtOH or media for 10 min, followed by lysis and fractionation. For each condition, the PKC isozyme was immunoprecipitated from either the cytosolic fraction or a solubilized membrane preparation using an antibody to the appropriate tag and its activity measured using an *in vitro* kinase assay.

Three treatments were examined: (1) no pretreatment (cells were never exposed to EtOH prior to cell fractionation or during the kinase assay); (2) EtOH in assay (cells were never exposed to EtOH prior to cell fractionation but EtOH was included in the kinase assay); and (3) EtOH pretreatment (cells were pretreated with EtOH prior to cell fractionation and EtOH was included in the kinase assay). For each treatment, kinase activity was measured under basal (absence of the endogenous lipid activators, PS, and DAG) or lipid-activated conditions. Significantly, EtOH decreased lipid-dependent kinase activity of PKC $\delta$  and PKC $\gamma$ , but only when they were isolated from the membrane

fraction (Figure 7). Moreover, adding EtOH directly to the kinase assay appeared to be sufficient to decrease kinase activities of either PKC $\gamma$  or PKC $\delta$  (Figure 7). In contrast, EtOH did not significantly alter the *in vitro* kinase activities of PKC $\beta$ , PKC $\epsilon$ , or PKC $\alpha$  isolated from the membrane fractions (Supplementary Figure S2).

### EtOH Pretreatment and DARPP-32 Phosphorylation in Rat Striatum

To determine if the EtOH-dependent potentiation of D<sub>1</sub> receptor signaling observed in the HEK293T cells is physiologically relevant in the brain, we examined EtOH-dependent modulation of D<sub>1</sub> receptor-stimulated DARPP-32 phosphorylation in slices prepared from rat striatum. Importantly, DARPP-32 is converted to a potent inhibitor of PP1 upon phosphorylation by PKA in response to an elevation of cellular cAMP levels. Fresh frozen striatal sections were treated with PBS (control), EtOH, SKF81297, or pretreated with EtOH, followed by SKF81297 treatment. Slices were incubated with an antibody specific for the PKA-dependent phospho-Thr<sup>34</sup> site of DARPP-32. As expected, treatment with the D<sub>1</sub>-selective agonist, SKF81297, increased the phosphorylation of DARPP-32 (Figure 8a and c). Elevation of phospho-DARPP-32 immunoreactivity is notably apparent in the cell bodies as well as in the surrounding neuropil (Figure 8a and c). Treatment with



**Figure 6** PKC inhibitors mimic the effects of EtOH and reduce basal D<sub>1</sub> receptor phosphorylation. HEK293T cells were pretreated with GFX109203X (GFX, 500 nM) or rottlerin (10  $\mu$ M) for 45 min. EtOH was added to the indicated samples 10 min prior to the end of the 45 min incubation period. (Top) Autoradiogram of D<sub>1</sub> receptor immunoprecipitates from a representative *in situ* phosphorylation assay; (bottom) band density for each condition. The data are normalized as the percentage of control for each individual experiment. The histogram represents the mean  $\pm$  SEM from nine independent experiments (\* $p$  < 0.05, ANOVA followed by Bonferroni pairwise comparisons; # $p$  < 0.05 compared with the control, ANOVA followed by Dunnett's *post hoc* test).

EtOH alone also increased the level of DARPP-32 phosphorylation by a small, but significant extent (Figure 8a and c) in agreement with previous reports (Maldve *et al.*, 2002; Donohue *et al.*, 2005). Importantly, consistent with our findings with HEK293T cells, EtOH pretreatment synergistically potentiated SKF81297-stimulated DARPP-32 phosphorylation in comparison with the agonist treatment alone (Figure 8a–c). EtOH potentiation of agonist treatment is especially noticeable at higher magnification (Figure 8b). These results confirm the notion that EtOH exposure potentiates D<sub>1</sub> receptor signaling pathways in the brain.

## DISCUSSION

Our current investigation illuminates a novel mechanism for how acute EtOH exposure can potentiate dopaminergic signaling mediated through the D<sub>1</sub> receptor subtype. This G-protein-coupled receptor is known to be phosphorylated by multiple protein kinases, including GRKs (Tiberi *et al.*, 1996; Rankin *et al.*, 2006), PKA (Jiang and Sibley, 1999; Mason *et al.*, 2002), and PKC (Gardner *et al.*, 2001). Phosphorylation by these various kinases negatively modulates receptor signaling and/or expression at the cell surface. Recently, we have determined that PKC constitutively phosphorylates the D<sub>1</sub> receptor in an isozyme-specific manner (unpublished observations). As shown in the present study, inhibition of this constitutive PKC phosphorylation potentiates agonist-stimulated D<sub>1</sub> receptor

signaling. Notably, EtOH exposure was found to diminish D<sub>1</sub> receptor phosphorylation and potentiate receptor signaling through inhibition of constitutive PKC phosphorylation. This effect appears to occur in an isozyme-specific manner in that only membrane-associated PKC $\delta$  or PKC $\gamma$  activities were found to be inhibited by EtOH treatment.

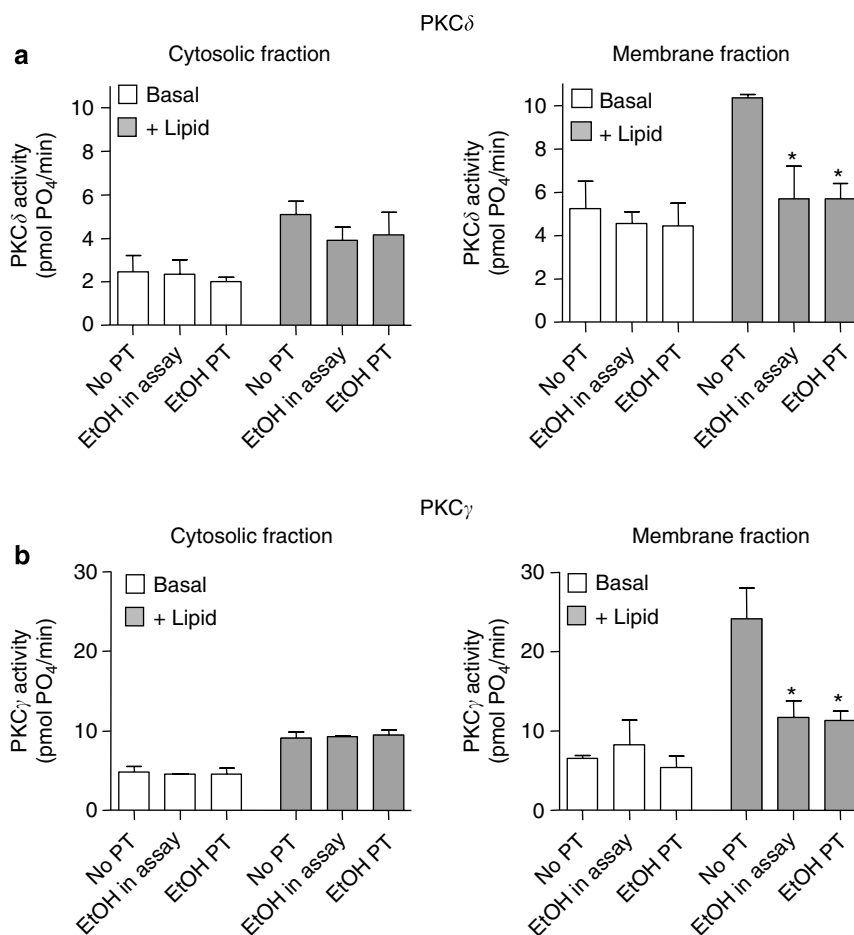
On the basis of recent experimentation, we have found that the D<sub>1</sub> receptor is phosphorylated by multiple PKC isozymes, although the corresponding phosphorylation sites on the receptor have not been completely elucidated as of yet. We hypothesize that EtOH inhibits only a subset of the PKC isozymes engaged in D<sub>1</sub> receptor phosphorylation and/or diminishes phosphorylation on the subset of receptor residues selectively targeted by PKC $\delta$  or PKC $\gamma$ . These PKC $\delta$  or PKC $\gamma$  phosphorylation sites may be distinct from, or partially overlap with other PKC phosphorylation sites on the receptor, such as those for PKC $\beta$ . Complete mapping (in progress) of all the PKC phosphorylation sites on the D<sub>1</sub> receptor, and their isozyme specificity, should shed light on these issues.

Importantly, both PKC $\delta$  and PKC $\gamma$  are known to be expressed in the brain, including the striatum and in particular the NAC (Tanaka and Saito, 1992; Merchant *et al.*, 1993); a region that is rich in D<sub>1</sub> receptor expression. Notably, the striatum is the site of action for many drugs of abuse. Differences between the dorsal striatum (a region that controls locomotion) and the ventral striatum (a region that is associated with emotion and motivational aspects of behavior) with regards to drug abuse have been reported. The dorsal striatum appears to be involved in the establishment of reward associated memories and habit formation (Vanderschuren *et al.*, 2005; Volkow *et al.*, 2006), whereas the major component of the ventral striatum, the NAC, is involved in the rewarding properties of many drugs of abuse such as EtOH (Carelli, 2002). In this regard, it is interesting to note that following acute administration, EtOH concentrations in the striatum rise to levels that are twofold greater than those observed in other brain regions (Chen *et al.*, 2007).

Consistent with our present observations, it is interesting to note that mice lacking PKC $\gamma$  have been found to consume more alcohol, display less behavioral inhibition, and are less sensitive to the anxiolytic effects of EtOH (Bowers *et al.*, 2001; Bowers and Wehner, 2001). Although PKC $\gamma$  is not expressed in the HEK293T cells, the overlapping expression of the D<sub>1</sub> receptor and PKC $\gamma$  in the NAC suggests that EtOH-dependent modulation of D<sub>1</sub> receptor signaling by this PKC isozyme, as well as PKC $\delta$ , may indeed occur *in vivo*.

The ability of EtOH to directly regulate PKC activity has been investigated previously, but this work remains somewhat controversial. Modulation of PKC activity by EtOH appears to be dependent on assay conditions and the specific isozymes in question. For example, acute EtOH treatment has been found to inhibit PKC activity in membranes prepared from rat brain using protamine sulfate as both an activator and substrate (Slater *et al.*, 1993). Similarly, EtOH reduced total PKC activity in membrane but not cytosolic fractions prepared from rat forebrains (Kruger *et al.*, 1993). EtOH treatments were also found to reduce PKC activity in hippocampal homogenates (Davis *et al.*, 1999). However, other studies showed no effect of EtOH on PKC activity, although some reports have





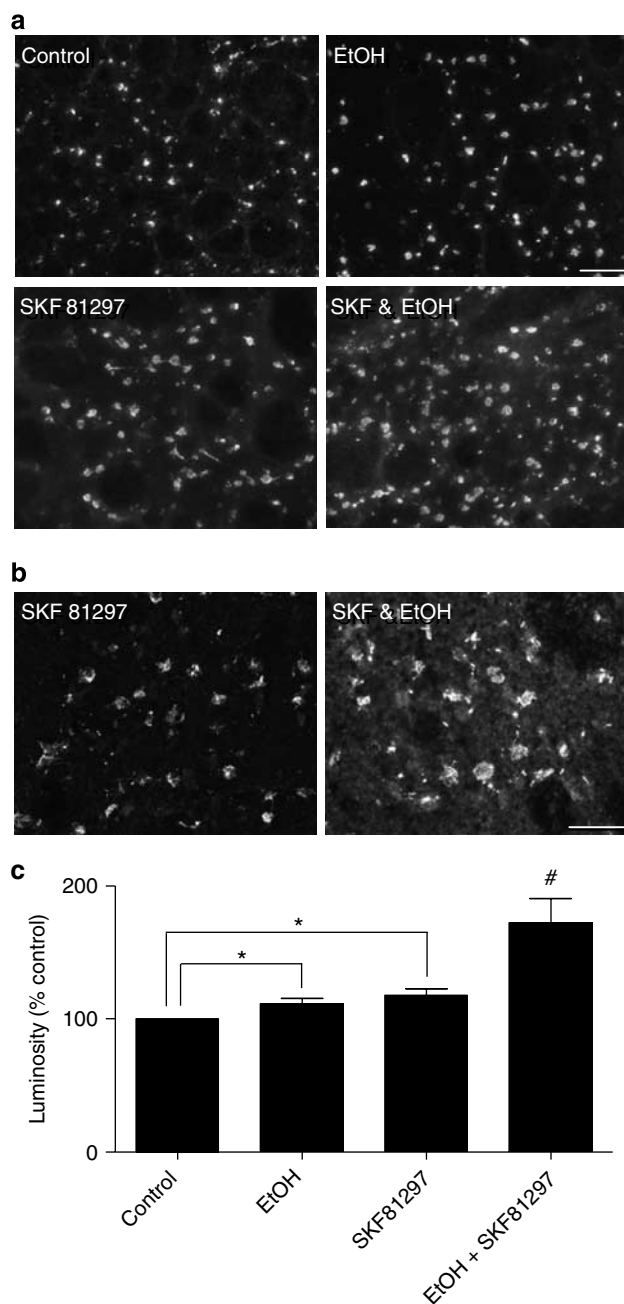
**Figure 7** EtOH attenuates lipid-activated PKC $\delta$  and PKC $\gamma$  activities in membrane fractions. Cells overexpressing either PKC $\delta$  or PKC $\gamma$  were pretreated with media or EtOH (100 mM) for 10 min, followed by extraction and immunoprecipitation of the isozyme. The kinase activity of the isozyme-specific immunoprecipitates was directly assessed using an *in vitro* kinase assay. 'No pretreatment (PT)' samples were never exposed to EtOH both prior and during the kinase assay. 'EtOH in assay' samples were from the same cellular preparations as the 'no pretreatment' samples except that EtOH (100 mM) was included in the kinase assay. 'EtOH PT' samples were treated with 100 mM EtOH for 10 min prior to assay. For preparations that were pretreated with EtOH before cell fractionation, EtOH was maintained in the kinase assay. For each condition, kinase activity was measured under basal (no PS or DAG) or lipid-activated conditions. No specific phosphorylation was measured in cells transfected with empty tagged vector. Left panel, cytosolic fraction; right panel, membrane fraction. (a) PKC $\delta$  and (b) PKC $\gamma$ . Data are presented as mean  $\pm$  SEM of three independent experiments. Significantly different to 'no pretreatment' for lipid-activated conditions (\* $p$  < 0.05, ANOVA followed by Bonferroni pairwise comparisons).

described EtOH-dependent activation of PKC (Machu *et al*, 1991; Messing *et al*, 1991; Satoh *et al*, 2006).

EtOH treatment has also been shown to promote the subcellular translocation of specific PKC isozymes. Chronic EtOH exposure (48 h) promotes translocation of PKC $\delta$  and PKC $\epsilon$  between specific intracellular compartments (Gordon *et al*, 1997). The subcellular redistribution of PKC $\epsilon$  but not PKC $\delta$  is also evident in cellular fractions prepared from cardiac myocytes (Miyamae *et al*, 1998). Moreover, acute EtOH administration differentially alters PKC expression in membrane and cytosolic fractions prepared from the rat cortex. Notably, EtOH treatment (60 min) decreases PKC $\gamma$  expression in the membrane fraction (Kumar *et al*, 2006). Although not directly addressed in this study, our *in vitro* kinase assay results suggest that isozyme translocation is not responsible for the decrease of PKC $\delta/\gamma$  activities by EtOH. Notably, direct addition of EtOH to the *in vitro* kinase assays is sufficient to attenuate the kinase activities of PKC $\delta$  and PKC $\gamma$ . Also treatment of cells with EtOH prior

to cell fractionation did not further decrease the kinase activities of PKC $\delta/\gamma$  immunoprecipitated from the membrane fraction as might be expected if EtOH promoted PKC translocation from the membrane to the cytosol.

The specific mechanism by which EtOH decreases the kinase activities of PKC $\delta$  and PKC $\gamma$  is not completely clear. Notably, EtOH was found to only inhibit the activities of PKC $\delta$  or PKC $\gamma$  when isolated from the membrane fraction—there was no effect of EtOH treatment on the activities of these enzymes when they were immunoprecipitated from the cytosolic fraction. Thus, the inhibitory effect of EtOH may be uniquely restricted to when the PKC isozyme is in association with plasma membrane components. Phosphorylation is a well-described mechanism for regulating PKC activity, with the general dogma being that threonine phosphorylation in the activation loop is required for conventional PKC activation (Parekh *et al*, 2000; Wilkie *et al*, 2007). Notably, the phosphorylation state of conventional PKCs is known to vary in a regulated manner based



**Figure 8** EtOH pretreatment potentiates agonist-mediated phosphorylation of DARPP-32 in rat striatum. (a) Rat striatal slices were treated with PBS (control), EtOH (25 mM/15 min), SKF81297 (1  $\mu$ M/15 min), or pretreated with EtOH (25 mM/15 min), followed by SKF81297 treatment (1  $\mu$ M/15 min). Slices were incubated with an antibody that recognizes the phospho-Thr<sup>34</sup> site of DARPP-32. (b) At higher magnification, EtOH pretreatment clearly increased SKF81297-stimulated phospho-DARPP-32 immunoreactivity in the cell bodies. (c) Histogram showing the percentage of phospho-DARPP-32 immunoreactivity compared with the control. The cumulative data indicate that EtOH pretreatment potentiated SKF81297-stimulated DARPP-32 phosphorylation by  $172 \pm 18.2\%$  over control. In comparison, EtOH or SKF81297 treatment alone potentiated DARPP-32 phosphorylation by  $112 \pm 3.5$  and  $118 \pm 4.8\%$ , respectively. Data are normalized as the percentage of control and representative of three independent experiments (\* $p < 0.05$ , paired Student's *t*-test; # $p < 0.05$  compared with the control, ANOVA followed by Dunnett's *post hoc* test). Bar, 150  $\mu$ m (a); bar, 60  $\mu$ m (b).

on their subcellular compartmentalization (Gallegos *et al*, 2006). One might then speculate that EtOH diminishes the phosphorylation states and resulting activities of PKC $\delta$  and PKC $\gamma$  only when they are in association with the plasma membrane.

Another intriguing possibility is that EtOH may target PKC isozyme-specific interacting proteins present in the membrane fraction. Indeed, a number of PKC isozyme-specific interacting proteins have been identified, which might regulate PKC activity (Poole *et al*, 2004). In this regard, EtOH has been shown to promote the uncoupling of the scaffolding protein, RACK1, from PKC $\beta_2$  (Ron *et al*, 2000). Of note, in our study, any PKC-interacting protein co-immunoprecipitating with the PKC isozymes would be included in the *in vitro* kinase assays. In this scenario, association with a putative PKC-interacting protein may render the PKC isozyme susceptible to inhibition by EtOH (via regulating phosphorylation?) or, perhaps more interestingly, the PKC-interacting protein itself may be the target of EtOH. In this manner, the repertoire and location of isozyme-specific PKC-interacting proteins may prove to be critical determinants for EtOH-dependent modulation of PKC $\delta/\gamma$  activities. These various possibilities are currently under investigation.

Notably, additional effectors besides DARPP-32 that are downstream of the D<sub>1</sub> receptor are also likely to be modulated by the EtOH-dependent potentiation of D<sub>1</sub> receptor signaling. For example, the transcription factor CREB is phosphorylated and subsequently activated by kinases such as PKA, a downstream effector of D<sub>1</sub> receptor signaling. Indeed, increased adenylyl cyclase and PKA activity have been linked to increased ethanol consumption in mice (Wand *et al*, 2001). Moreover, many drugs of abuse, including EtOH, increase CREB phosphorylation in the striatum, a response that is postulated to promote EtOH self administration (Yang *et al*, 1998; Nestler, 2001; Newton and Messing, 2006). Equally conceivable is that other targets of PKC isozymes, not just the D<sub>1</sub> receptor, are regulated by EtOH. If so, this may partly explain the multifaceted effects of EtOH *in vivo* and potentially provide a platform for therapeutic intervention in treating alcoholism.

In summary, our model suggests that acute EtOH treatment decreases the enzymatic activities of PKC $\delta$  and/or PKC $\gamma$  in the plasma membrane, decreases basal D<sub>1</sub> receptor phosphorylation and potentiates DA-stimulated cAMP accumulation and downstream signaling pathways. We propose that the EtOH-dependent decrease of basal D<sub>1</sub> receptor phosphorylation is a consequence of reduced membrane PKC activity, specifically PKC $\delta$  in HEK293T cells and either PKC $\delta$  or PKC $\gamma$  in the brain. This modification may stabilize the D<sub>1</sub> receptor in a conformation primed for efficient coupling to G-proteins (G $\alpha_s$ /olf), such that upon challenge with agonist, cAMP accumulation is potentiated. Increased phosphorylation of DARPP-32 on Thr<sup>34</sup> is a clear downstream consequence of the potentiation by EtOH of D<sub>1</sub> receptor-stimulated cAMP production. Further, elevation of phospho-Thr<sup>34</sup>-DARPP-32 levels will circumvent EtOH-dependent inhibition of the NMDA receptor by inhibiting the activity of PP1 and permitting increased phosphorylation of the NR1 subunit leading to enhanced channel activity (Maldve *et al*, 2002; Newton and Messing, 2006), a modification that contributes to synaptic plasticity and

EtOH tolerance (Lovinger, 2002). Therefore, the EtOH-dependent potentiation of D<sub>1</sub> receptor signaling and subsequent phosphorylation of Thr<sup>34</sup>-DARPP-32 may contribute to the rewarding and reinforcing properties of alcohol.

## ACKNOWLEDGEMENTS

We thank David Cabrera for technical support and Dr David Lovinger for reading the manuscript. MLR was supported by a NINDS Competitive Fellowship.

## DISCLOSURE/CONFLICT OF INTEREST

None.

## Compensation for professional services in any of the previous 3 years:

Elizabeth Rex: None  
 Michele Rankin: None  
 Marjorie Ariano: Pfizer  
 David R. Sibley:  
 John Wiley & Sons  
 Elsevier  
 Springer-Verlag  
 Taylor and Francis  
 American College of Neuropsychopharmacology

## REFERENCES

- Adlersberg M, Hsiung SC, Glickstein SB, Liu KP, Tamir H, Schmauss C (2004). Regulation of dopamine D-receptor activation *in vivo* by protein phosphatase 2B (calcineurin). *J Neurochem* **90**: 865–873.
- Ariano MA, Wagle N, Grissell AE (2005). Neuronal vulnerability in mouse models of Huntington's disease: membrane channel protein changes. *J Neurosci Res* **80**: 634–645.
- Bowers BJ, Elliott KJ, Wehner JM (2001). Differential sensitivity to the anxiolytic effects of ethanol and flunitrazepam in PKCgamma null mutant mice. *Pharmacol Biochem Behav* **69**: 99–110.
- Bowers BJ, Wehner JM (2001). Ethanol consumption and behavioral impulsivity are increased in protein kinase Cgamma null mutant mice. *J Neurosci* **21**: RC180.
- Brodie MS, Pesold C, Appel SB (1999). Ethanol directly excites dopaminergic ventral tegmental area reward neurons. *Alcohol Clin Exp Res* **23**: 1848–1852.
- Carelli RM (2002). The nucleus accumbens and reward: neurophysiological investigations in behaving animals. *Behav Cogn Neurosci Rev* **1**: 281–296.
- Chen JC, Lin CC, Ng CC, Chiu TF, Shyr MH (2007). Uneven distribution of ethanol in rat brain following acute administration, with the highest level in the striatum. *J Stud Alcohol Drugs* **68**: 649–653.
- Chin ER, Olson EN, Richardson JA, Yang Q, Humphries C, Shelton JM et al (1998). A calcineurin-dependent transcriptional pathway controls skeletal muscle fiber type. *Genes Dev* **12**: 2499–2509.
- D'Souza MS, Ikegami A, Olsen CM, Duvauchelle CL (2003). Chronic D1 agonist and ethanol coadministration facilitate ethanol-mediated behaviors. *Pharmacol Biochem Behav* **76**: 335–342.
- Davis MI, Szarowski D, Turner JN, Morrisett RA, Shain W (1999). *In vivo* activation and *in situ* BDNF-stimulated nuclear translocation of mitogen-activated/extracellular signal-regulated protein kinase is inhibited by ethanol in the developing rat hippocampus. *Neurosci Lett* **272**: 95–98.
- Donohue T, Hoffman PL, Tabakoff B (2005). Effect of ethanol on DARPP-32 phosphorylation in transgenic mice that express human type VII adenylyl cyclase in brain. *Alcohol Clin Exp Res* **29**: 310–316.
- Eiler II WJ, Seyoum R, Foster KL, Mailey C, June HL (2003). D1 dopamine receptor regulates alcohol-motivated behaviors in the bed nucleus of the stria terminalis in alcohol-preferring (P) rats. *Synapse* **48**: 45–56.
- El-Ghundi M, George SR, Drago J, Fletcher PJ, Fan T, Nguyen T et al (1998). Disruption of dopamine D1 receptor gene expression attenuates alcohol-seeking behavior. *Eur J Pharmacol* **353**: 149–158.
- Gallegos LL, Kunkel MT, Newton AC (2006). Targeting protein kinase C activity reporter to discrete intracellular regions reveals spatiotemporal differences in agonist-dependent signaling. *J Biol Chem* **281**: 30947–30956.
- Gardner B, Liu ZF, Jiang D, Sibley DR (2001). The role of phosphorylation/dephosphorylation in agonist-induced desensitization of D1 dopamine receptor function: evidence for a novel pathway for receptor dephosphorylation. *Mol Pharmacol* **59**: 310–321.
- Gordon AS, Yao L, Wu ZL, Coe IR, Diamond I (1997). Ethanol alters the subcellular localization of delta- and epsilon protein kinase C in NG108-15 cells. *Mol Pharmacol* **52**: 554–559.
- Gschwendt M, Muller HJ, Kielbassa K, Zang R, Kittstein W, Rincke G et al (1994). Rottlerin, a novel protein kinase inhibitor. *Biochem Biophys Res Commun* **199**: 93–98.
- Inoue Y, Yao L, Hopf FW, Fan P, Jiang Z, Bonci A et al (2007). Nicotine and ethanol activate protein kinase A synergistically via G(i) betagamma subunits in nucleus accumbens/ventral tegmental cocultures: the role of dopamine D(1)/D(2) and adenosine A(2A) receptors. *J Pharmacol Exp Ther* **322**: 23–29.
- Jackson A, Sedaghat K, Minerds K, James C, Tiberi M (2005). Opposing effects of phorbol-12-myristate-13-acetate, an activator of protein kinase C, on the signaling of structurally related human dopamine D1 and D5 receptors. *J Neurochem* **95**: 1387–1400.
- Jiang D, Sibley DR (1999). Regulation of D(1) dopamine receptors with mutations of protein kinase phosphorylation sites: attenuation of the rate of agonist-induced desensitization. *Mol Pharmacol* **56**: 675–683.
- Kim OJ, Gardner BR, Williams DB, Marinec PS, Cabrera DM, Peters JD et al (2004). The role of phosphorylation in D1 dopamine receptor desensitization: evidence for a novel mechanism of arrestin association. *J Biol Chem* **279**: 7999–8010.
- Kruger H, Wilce PA, Shanley BC (1993). Ethanol and protein kinase C in rat brain. *Neurochem Int* **22**: 575–581.
- Kumar S, Lane BM, Morrow AL (2006). Differential effects of systemic ethanol administration on protein kinase epsilon, gamma, and beta isoform expression, membrane translocation, and target phosphorylation: reversal by chronic ethanol exposure. *J Pharmacol Exp Ther* **319**: 1366–1375.
- Lovinger DM (2002). NMDA receptors lose their inhibitions. *Nat Neurosci* **5**: 614–616.
- Machu TK, Olsen RW, Browning MD (1991). Ethanol has no effect on cAMP-dependent protein kinase-, protein kinase C-, or Ca(2+)-calmodulin-dependent protein kinase II-stimulated phosphorylation of highly purified substrates *in vitro*. *Alcohol Clin Exp Res* **15**: 1040–1044.
- Maldives RE, Zhang TA, Ferrani-Kile K, Schreiber SS, Lippmann MJ, Snyder GL et al (2002). DARPP-32 and regulation of the ethanol sensitivity of NMDA receptors in the nucleus accumbens. *Nat Neurosci* **5**: 641–648.
- Mason JN, Kozell LB, Neve KA (2002). Regulation of dopamine D(1) receptor trafficking by protein kinase A-dependent phosphorylation. *Mol Pharmacol* **61**: 806–816.

- Merchenthaler I, Liposits Z, Reid JJ, Wetsel WC (1993). Light and electron microscopic immunocytochemical localization of PKC delta immunoreactivity in the rat central nervous system. *J Comp Neurol* **336**: 378–399.
- Messing RO, Petersen PJ, Henrich CJ (1991). Chronic ethanol exposure increases levels of protein kinase C delta and epsilon and protein kinase C-mediated phosphorylation in cultured neural cells. *J Biol Chem* **266**: 23428–23432.
- Mischak H, Goodnight JA, Kolch W, Martiny-Baron G, Schaehtle C, Kazanietz MG et al (1993). Overexpression of protein kinase C-delta and -epsilon in NIH 3T3 cells induces opposite effects on growth, morphology, anchorage dependence, and tumorigenicity. *J Biol Chem* **268**: 6090–6096.
- Miyamae M, Rodriguez MM, Camacho SA, Diamond I, Mochly-Rosen D, Figueredo VM (1998). Activation of epsilon protein kinase C correlates with a cardioprotective effect of regular ethanol consumption. *Proc Natl Acad Sci USA* **95**: 8262–8267.
- Monsma Jr FJ, Mahan LC, McVittie LD, Gerfen CR, Sibley DR (1990). Molecular cloning and expression of a D1 dopamine receptor linked to adenylyl cyclase activation. *Proc Natl Acad Sci USA* **87**: 6723–6727.
- Nestler EJ (2001). Molecular basis of long-term plasticity underlying addiction. *Nat Rev Neurosci* **2**: 119–128.
- Newton PM, Messing RO (2006). Intracellular signaling pathways that regulate behavioral responses to ethanol. *Pharmacol Ther* **109**: 227–237.
- Parekh DB, Ziegler W, Parker PJ (2000). Multiple pathways control protein kinase C phosphorylation. *EMBO J* **19**: 496–503.
- Phillips TJ, Brown KJ, Burkhart-Kasch S, Wenger CD, Kelly MA, Rubinstein M et al (1998). Alcohol preference and sensitivity are markedly reduced in mice lacking dopamine D2 receptors. *Nat Neurosci* **1**: 610–615.
- Poole AW, Pula G, Hers I, Crosby D, Jones ML (2004). PKC-interacting proteins: from function to pharmacology. *Trends Pharmacol Sci* **25**: 528–535.
- Price KL, Middaugh LD (2004). The dopamine D1 antagonist reduces ethanol reward for C57BL/6 mice. *Alcohol Clin Exp Res* **28**: 1666–1675.
- Rankin ML, Marinec PS, Cabrera DM, Wang Z, Jose PA, Sibley DR (2006). The D1 dopamine receptor is constitutively phosphorylated by G protein-coupled receptor kinase 4. *Mol Pharmacol* **69**: 759–769.
- Ron D, Vagts AJ, Dohrman DP, Yaka R, Jiang Z, Yao L et al (2000). Uncoupling of beta1IPKC from its targeting protein RACK1 in response to ethanol in cultured cells and mouse brain. *FASEB J* **14**: 2303–2314.
- Samson HH, Tolliver GA, Haraguchi M, Hodge CW (1992). Alcohol self-administration: role of mesolimbic dopamine. *Ann N Y Acad Sci* **654**: 242–253.
- Satoh A, Gukovskaya AS, Reeve Jr JR, Shimosegawa T, Pandol SJ (2006). Ethanol sensitizes NF-kappaB activation in pancreatic acinar cells through effects on protein kinase C-epsilon. *Am J Physiol Gastrointest Liver Physiol* **291**: G432–G438.
- Shen RY (2003). Ethanol withdrawal reduces the number of spontaneously active ventral tegmental area dopamine neurons in conscious animals. *J Pharmacol Exp Ther* **307**: 566–572.
- Shen RY, Chiodo LA (1993). Acute withdrawal after repeated ethanol treatment reduces the number of spontaneously active dopaminergic neurons in the ventral tegmental area. *Brain Res* **622**: 289–293.
- Slater SJ, Cox KJ, Lombardi JV, Ho C, Kelly MB, Rubin E et al (1993). Inhibition of protein kinase C by alcohols and anaesthetics. *Nature* **364**: 82–84.
- Tanaka C, Saito N (1992). Localization of subspecies of protein kinase C in the mammalian central nervous system. *Neurochem Int* **21**: 499–512.
- Tiberi M, Nash SR, Bertrand L, Lefkowitz RJ, Caron MG (1996). Differential regulation of dopamine D1A receptor responsiveness by various G protein-coupled receptor kinases. *J Biol Chem* **271**: 3771–3778.
- Vanderschuren LJ, Di Ciano P, Everitt BJ (2005). Involvement of the dorsal striatum in cue-controlled cocaine seeking. *J Neurosci* **25**: 8665–8670.
- Volkow ND, Wang GJ, Telang F, Fowler JS, Logan J, Childress AR et al (2006). Cocaine cues and dopamine in dorsal striatum: mechanism of craving in cocaine addiction. *J Neurosci* **26**: 6583–6588.
- Wand G, Levine M, Zweifel L, Schwindinger W, Abel T (2001). The cAMP-protein kinase A signal transduction pathway modulates ethanol consumption and sedative effects of ethanol. *J Neurosci* **21**: 5297–5303.
- Weiss F, Lorang MT, Bloom FE, Koob GF (1993). Oral alcohol self-administration stimulates dopamine release in the rat nucleus accumbens: genetic and motivational determinants. *J Pharmacol Exp Ther* **267**: 250–258.
- Wilkie MB, Besheer J, Kelley SP, Kumar S, O'Buckley TK, Morrow AL et al (2007). Acute ethanol administration rapidly increases phosphorylation of conventional protein kinase C in specific mammalian brain regions *in vivo*. *Alcohol Clin Exp Res* **31**: 1259–1267.
- Yang X, Horn K, Wand GS (1998). Chronic ethanol exposure impairs phosphorylation of CREB and CRE-binding activity in rat striatum. *Alcohol Clin Exp Res* **22**: 382–390.

Supplementary Information accompanies the paper on the Neuropsychopharmacology website (<http://www.nature.com/npp>)